

KTN Crystals Open Up New Possibilities and Applications

Shogo Yagi[†]

Abstract

By exploiting the giant electro-optic effect of potassium tantalate niobate (KTN) crystal, we have developed a wide-angle fast optical beam scanner and a fast varifocal lens. These devices are applicable not only to optical communications, but also to various other fields that use optical beams, so we are seeking sales scenarios for KTN devices.

1. Introduction

Light is identified by its wavelength, intensity, polarization, phase, and propagation direction. Therefore, any devices that use light manipulate some of these characteristics. For example, lenses, prisms, and mirrors change the propagation direction of light, displays change its intensity, and holography manipulates its phase.

Potassium tantalate niobate (KTN) crystals can manipulate all of these characteristics. In particular, we would like to emphasize the quick response of their propagation-direction-changing capabilities. It means that KTN could take the place of fundamental optical devices such as lenses, prisms, and mirrors (**Fig. 1**), when they need to operate at high frequencies.

2. Basic properties of KTN

KTN is an oxide of potassium (K), tantalum (Ta), and niobium (Nb). Its chemical formula is $\text{KTa}_{1-x}\text{Nb}_x\text{O}_3$. It has been known since the 1950s that KTN has a very large electro-optic effect; that is, its refractive index is changed greatly by a comparatively low applied voltage. To be used as an optical device, the KTN must be a single crystal so that the incident light does not scatter. However, growing single crystals of KTN has been extremely difficult,

which has prevented KTN from entering practical use. NTT Photonics Laboratories has developed a KTN crystal growth technique and in 2003 it was mature enough to consistently give high-quality large KTN single crystals (**Fig. 2**) [1].

KTN has four different crystallographic structures depending on the temperature: rhombohedral, monoclinic, tetragonal, and cubic from low to high temperatures, as shown in **Fig. 3**. KTN optical devices are used at temperatures a few degrees above the tetragonal-to-cubic transition temperature. By changing the Ta:Nb ratio in KTN, we can control its transition temperature and set the operating temperature to room temperature by choosing $x = 0.35$. An example of the temperature dependence of the relative dielectric constant is shown in **Fig. 4**, where the relative dielectric constant reaches 50,000 at the transition

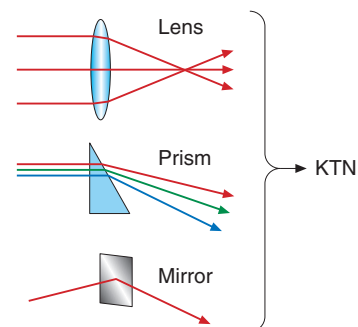


Fig. 1. Optical devices that KTN can replace.

[†] NTT Photonics Laboratories
Atsugi-shi, 243-0198 Japan

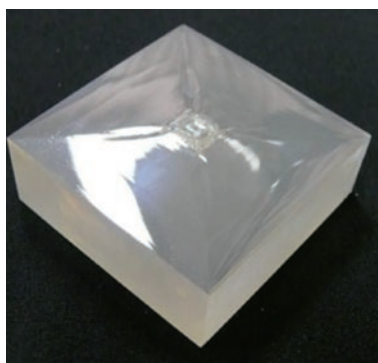


Fig. 2. Single crystal of KTN grown at NTT (53 mm x 53 mm x 20 mm).

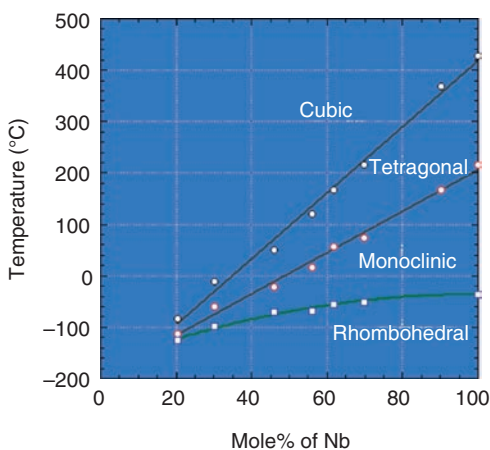


Fig. 3. Phase transitions of KTN.

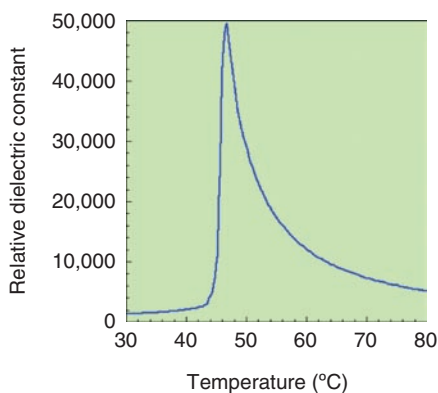


Fig. 4. Temperature dependence of dielectric constant.

temperature of 47°C.

The variation in refractive index δn caused by an applied electric field is given by

$$\delta n = -\frac{0.136}{2} n_0^3 \varepsilon_0^2 \varepsilon_r^2 E^2 \quad (1)$$

This tells us that δn is proportional to the square of the applied electric field E , where n_0 is the refractive index, ε_0 is the dielectric constant in vacuum, and ε_r is the relative dielectric constant. The fact that the temperature dependence of ε_r in Fig. 4 has a sharp peak means that KTN can be used for applications where the use of temperature controllers can be afforded. Since it is important to reduce the cost of temperature control, we chose a Nb content that sets the operating temperature to a few degrees above room temperature, which allows us to use a micro-heater instead of a Peltier cooler.

The reason the KTN in Fig. 2 looks opaque is that the picture was taken at room temperature, so the KTN was tetragonal. In the tetragonal structure, a lot of ferroelectric domains scatter light. On the other hand, KTN becomes transparent when the temperature is raised and it transforms into the cubic structure.

The electro-optic effects in typical materials are compared in **Table 1**. Lithium niobate (LN) and barium titanate (BT) show the Pockels effect, which means that the variation in the refractive index is proportional to the electric field. LN is used in optical communications and BT is used in laboratories for optics studies. Lead lanthanum zirconium titanate (PLZT) and KTN show the Kerr effect, which means that the variation in refractive index is proportional to the square of the applied electric field. Although the Pockels effect exceeds the Kerr effect when the applied field is low, the Kerr effect is stronger at higher fields. The comparisons in Table 1 are for a practical electric field value of 500 V/mm. They show that the electro-optic effect of KTN is outstanding. This means the KTN lets you reduce the voltage or the device size when you do something using its electro-optic effect.

3. Fast optical beam scanner

NTT has discovered a special electro-optic effect, called the *space-charge-controlled EO effect*, in KTN [2]. When the electrodes are made of titanium, electrons are injected into the KTN from the cathode (**Fig. 5**) to form an electric field with a gradient given by

Table 1. Comparison of electro-optic materials.

		Electro-optic coefficient	Variation in refractive index at 500 V/mm	Comment
LN	Lithium niobate	30 pm/V	0.00009	Pockels effect
BT	Barium titanate	1640 pm/V	0.005	Pockels effect
PLZT	Lead lanthanum zirconium titanate	0.36 fm ² /V ²	0.00054	Kerr effect
KTN	Potassium tantalate niobate	10 fm ² /V ²	0.0152	Kerr effect

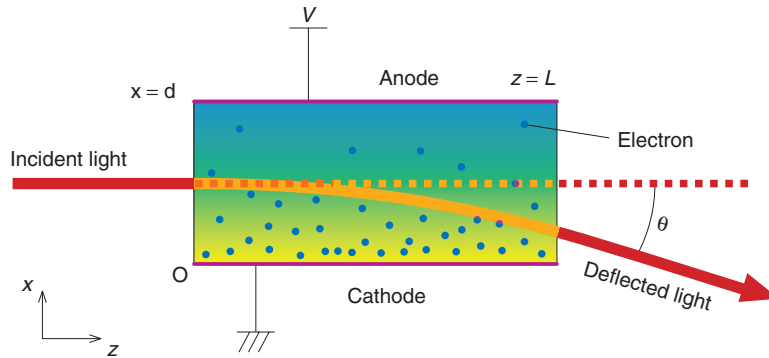


Fig. 5. Space-charge-controlled EO effect.

$$E(x) = \frac{3V}{2d^{3/2}} \sqrt{x}, \quad (2)$$

where x is the distance from the cathode, V is the applied voltage, and d is the thickness of the KTN. Using Eq. (1), we obtain the variation in refractive index as

$$\delta n(x) = -0.153n_0^3 \epsilon_0^2 \epsilon_r^2 \frac{V^2}{d^3} x. \quad (3)$$

It is proportional to x , which implies that the KTN changes the optical beam's propagation direction without deforming its shape, just like prisms do. Since this phenomenon arises from an electrical process, it is very fast compared with mechanical devices such as galvano-mirrors, polygon mirrors, and micro-electromechanical systems (MEMS) mirrors. Thus, KTN can provide the basis for a fast optical beam scanner.

The space-charge-controlled EO effect in KTN causes the beam deflection angle θ to accumulate as the light travels in the crystal:

$$\theta = -L \frac{\partial n}{\partial x} = -0.153n_0^3 \epsilon_0^2 \epsilon_r^2 \frac{V^2}{d^3} L, \quad (4)$$

where L is the light propagation length in KTN. For a typical case such as $d = 1$ mm, $L = 6$ mm, and $\epsilon_r = 30,000$, the deflection angle reaches ± 128 mrad

($\pm 7.3^\circ$) at $V = \pm 400$ V. This voltage is fairly small compared with that of the conventional EO deflector, which needs tens of thousands of volts.

We have confirmed the response time of less than 1 μ s for a single pulse and for 100-kHz continuous operation. As shown in Fig. 4 and Eq. (1), since the large electro-optic effect arises from the large dielectric constant, we should regard the KTN as working as a capacitor when we operate it at high frequency. For example, a typical KTN crystal with a size of 5 mm \times 6 mm \times 1 mm has a capacitance as large as 8 nF, which requires a current of 2 A for 100-kHz, 400-V operation. It is not difficult to make a resonant circuit for constant frequency operation in order to make a short pulse generator for low-frequency triggering. However, it is necessary to develop a high-performance amplifier for fast, high-frequency random operations.

We must also consider the resolution of the scanner. The deflection angle is proportional to V^2/d^3 , as given by Eq. (4), which means that the applied voltage increases as the 1.5th power of the KTN thickness to maintain the same deflection angle. Therefore, thinner KTN allows a much lower applied voltage. However, the resolution deteriorates as the KTN thickness

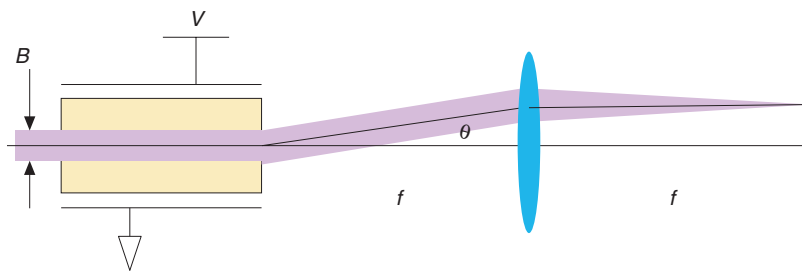


Fig. 6. Calculation of resolution.

is reduced, as shown in **Fig. 6**. If we let the beam diameter be B and the maximum deflection angle be θ and we place a lens of focal length f at a distance f from the KTN, then the beam is focused at a distance $2f$ from the KTN. The diameter of the focused spot is given by $2.4f\lambda/B$. Since the scanning range at the focal plane is $2f\tan\theta$, the resolution is defined by

$$\begin{aligned} \text{resolution} &= 2f\tan\theta \div 2.4f\lambda/B \\ &= \frac{0.83B}{\lambda} \tan\theta, \end{aligned} \quad (5)$$

The resolution is independent of the focal length. For example, the theoretical resolution is 41 when the wavelength is 532 nm, the beam diameter is 0.25 mm, and the scanning angle is $\pm 5^\circ$. A detailed analysis considering KTN properties is given in “High-resolution KTN Optical Beam Scanner” in this Special Feature [4].

Moreover, various factors such that the transition temperature are not homogeneous, so the deflected beam is reflected at the electrode surface when the KTN is thin and the saturated polarization deforms the beam when KTN is thick, making it difficult to enhance the resolution by the simple method depicted in Fig. 6. Therefore, we are examining various methods of increasing the resolution. One of them is introduced in “High-speed Spectrometer Using KTN Optical Beam Scanner” in this Special Feature [5].

4. Fast varifocal lens

When the electrodes are made of gold or platinum, electron injection is suppressed, so the usual electro-optic effect appears. By devising a special electrode structure, we have successfully made a KTN varifocal lens with a focal length that changes with the applied electric field. While the response time of the conventional varifocal lens is slower than 1 ms, our KTN varifocal lens has been experimentally measured to respond faster than 1 μ s. A detailed discus-

sion is given in “Fast Varifocal Lenses Based on $\text{KTa}_{1-x}\text{Nb}_x\text{O}_3$ (KTN) Single Crystals” in this Special Feature [6]. By using both the KTN varifocal lens and the KTN optical beam scanner in combination, we can now address an optical spot in three-dimensional space within 1 μ s.

5. Various applications of KTN devices

Since KTN devices manipulate the propagation direction of light, they can be applied not only to optical communications, but also various fields that use optical beams. Applications are mapped against resolution and operating frequency in **Fig. 7** and the advantages of KTN for each application are listed in **Table 2**. The resolution of the present KTN devices is insufficient for printers, copiers, and displays, which are large markets. Therefore, we need to continue to enhance the resolution. On the other hand, the present resolution is sufficient for spectrometers and medical use, and it matches the achievable range for laser machining and microscopes. For these possible applications, we are now examining other properties such as long-term reliability, beam quality, usable wavelengths, and high power durability. Although long-term reliability is crucial for optical communications and laser radars because it is difficult or troublesome to repair such equipment, we are first focusing on medical uses because these involve saving human lives. We are currently at the first stage of analyzing the deterioration mechanism. To meet the various demands for KTN optical beam scanners, we are going to increase their resolution and examine the individual specifications needed for each application.

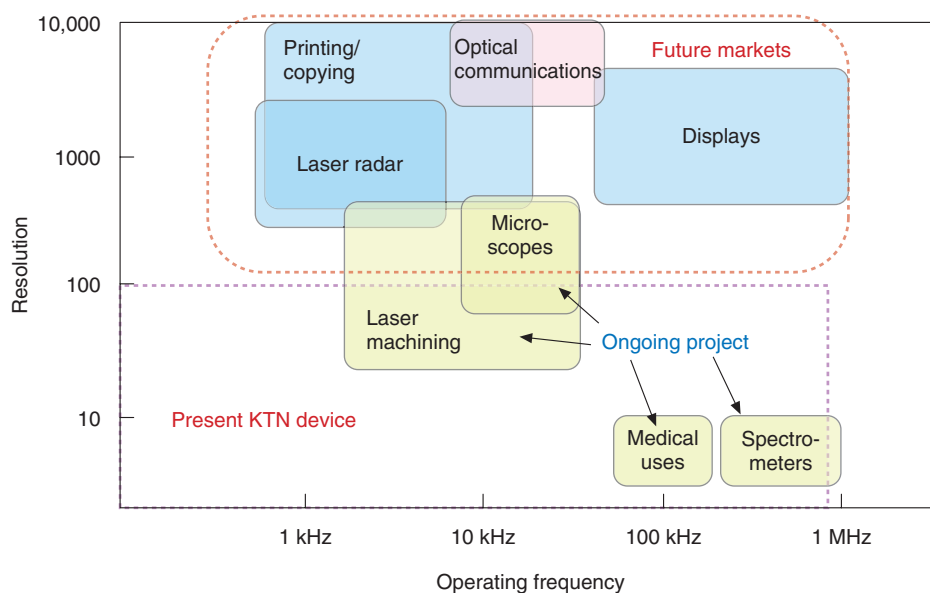


Fig. 7. Applications mapped against resolution and frequency.

Table 2. Advantages of KTN.

Applications	Market size (billion yen)	Advantages of KTN
Medical use	10	Compact size
Laser machining	2	High speed
Spectrometers	2	Low cost
Microscopes	1	High speed, random access
Laser radar	10	Compact size, low noise, random access
Printing/copying	50	High speed
Displays	20	High speed Compact size

<https://www.ntt-review.jp/archive/ntttechnical.php?contents=ntr200912sf5.html>

- [5] T. Imai, S. Yagi, and M. Sasaura, "Fast Varifocal Lenses Based on $\text{KTa}_{1-x}\text{Nb}_x\text{O}_3$ (KTN) Single Crystals," NTT Technical Review, Vol. 7, No. 12, 2009.

<https://www.ntt-review.jp/archive/ntttechnical.php?contents=ntr200912sf6.html>

References

- [1] "Successful Preparation of KTN Crystals with the Highest Reported Electro-optic Effect and the Potential for Providing a Great Improvement in Optical Device Performance," NTT Technical Review, Vol. 1, No. 9, pp. 56–58, 2003.
<https://www.ntt-review.jp/archive/ntttechnical.php?contents=ntr200312056.pdf>
- [2] K. Nakamura, "Optical Beam Scanner Using Kerr Effect and Space-charge-controlled Electrical Conduction in $\text{KTa}_{1-x}\text{Nb}_x\text{O}_3$ Crystal," NTT Technical Review, Vol. 5, No. 7, 2007.
<https://www.ntt-review.jp/archive/ntttechnical.php?contents=ntr200709sp2.html>
- [3] K. Naganuma, J. Miyazu, and S. Yagi, "High-resolution KTN Optical Beam Scanner," NTT Technical Review, Vol. 7, No. 12, 2009.
<https://www.ntt-review.jp/archive/ntttechnical.php?contents=ntr200912sf4.html>
- [4] Y. Sasaki, "High-speed Spectrometer Using KTN Optical Beam Scanner," NTT Technical Review, Vol. 7, No. 12, 2009.



Shogo Yagi

Senior Research Engineer, Advanced Optoelectronics Laboratory, NTT Photonics Laboratories.

He received the B.S. and M.S. degrees in physics from Tohoku University, Miyagi, in 1983 and 1985, respectively. He joined NTT Ibaraki Electrical Communication Laboratories in 1985. Since then, he has been conducting research on optical memories using ferroelectric materials and holography. From April 1991 to March 1992, he was a visiting scientist at the California Institute of Technology, Pasadena, USA. He is a member of the Japan Society of Applied Physics.